

New Forest Log Cabins Ltd



**Sussex (Konecta)
Transportable Mobile Home**



www.newforestlogcabins.co.uk

Tel: 01202 868844

nfl.info@newforestlogcabins.co.uk

New Forest Log Cabins Ltd



**Sussex (Konecta)
Transportable Mobile Home**



www.newforestlogcabins.co.uk

Tel: 01202 868844

nfl.info@newforestlogcabins.co.uk

New Forest Log Cabins Ltd



**Sussex (Konecta)
Transportable Mobile Home**



www.newforestlogcabins.co.uk

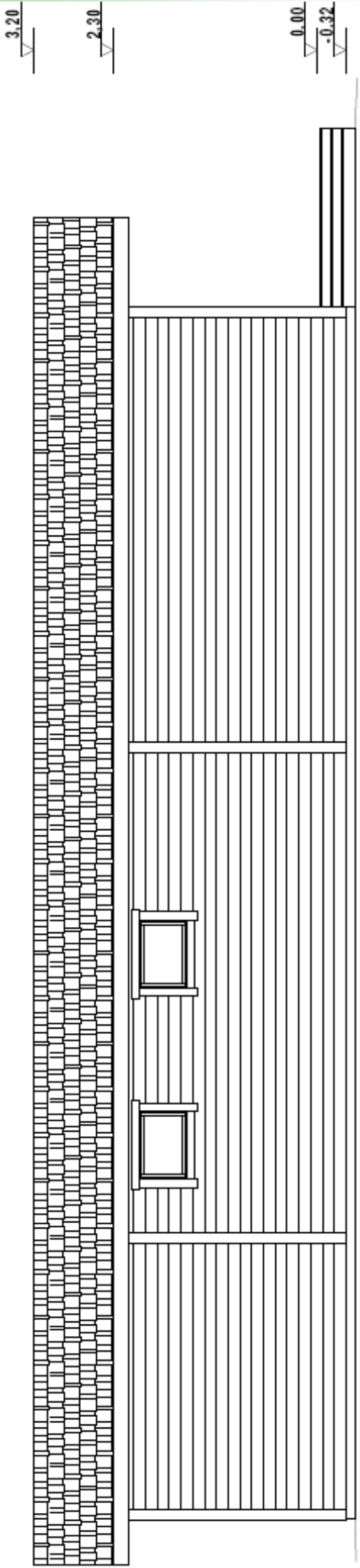
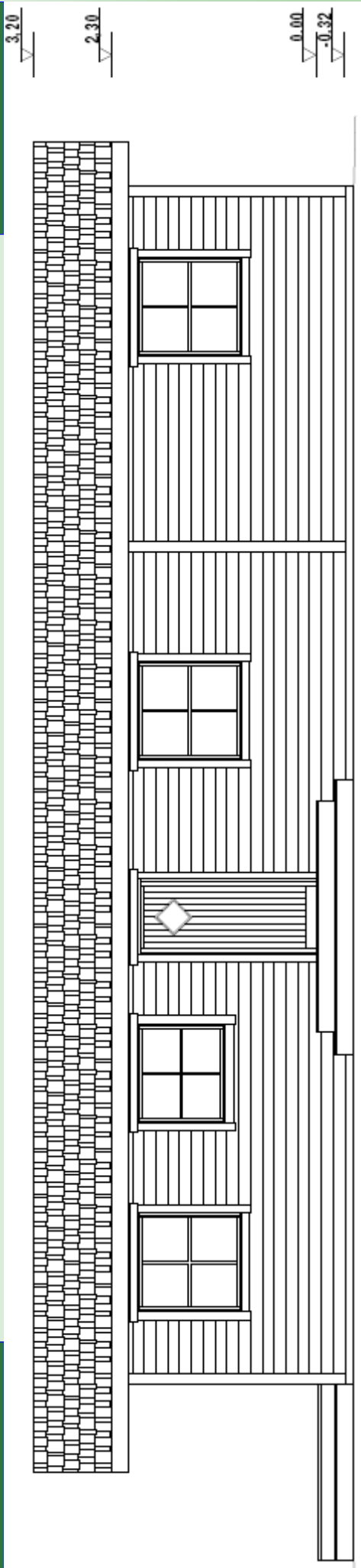
Tel: 01202 868844

nfl.info@newforestlogcabins.co.uk

New Forest Log Cabins Ltd

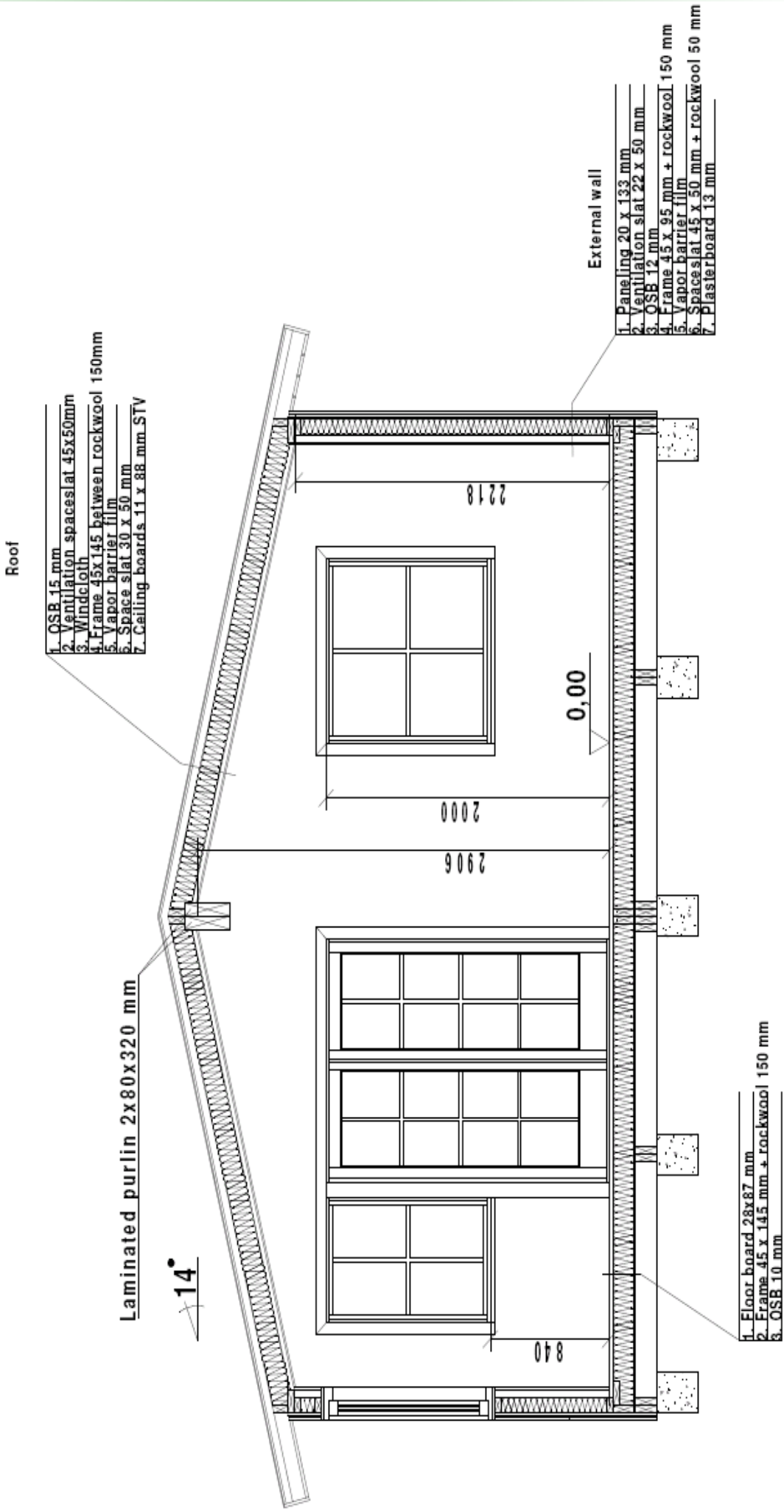


Sussex (Konecta) Transportable Mobile Home



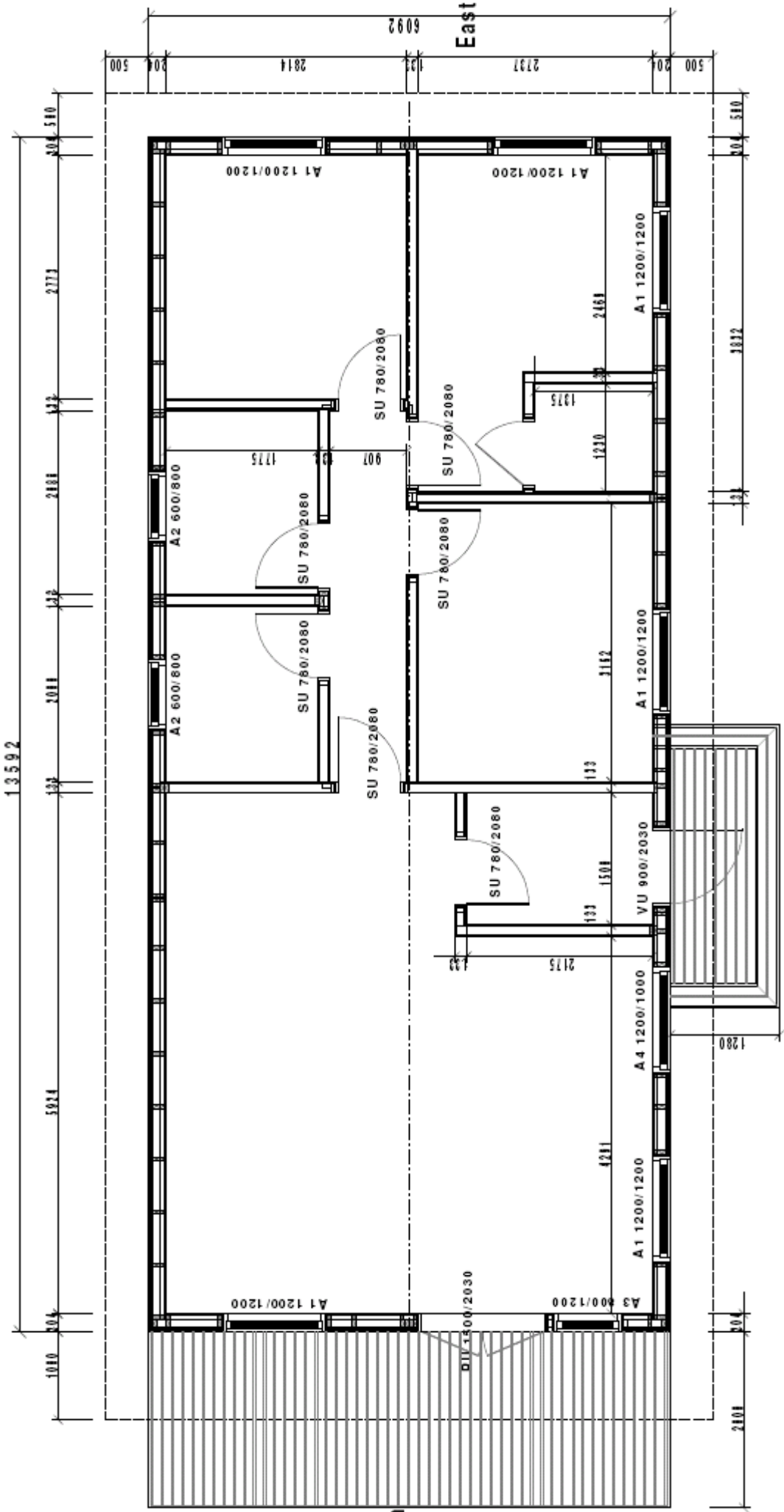


**Sussex (Konecta)
Transportable Mobile Home**





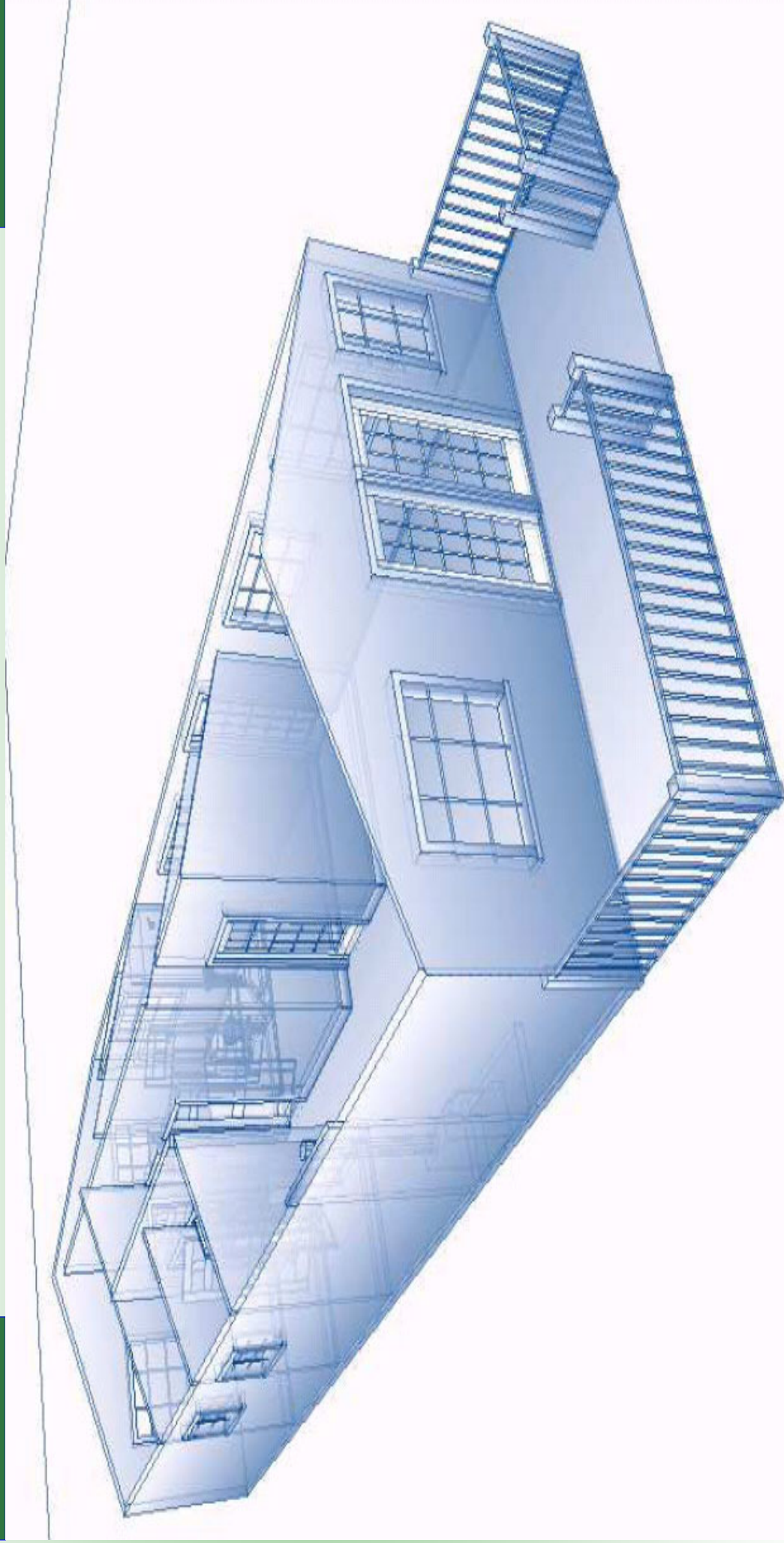
**Sussex (Konecta)
Transportable Mobile Home**



New Forest Log Cabins Ltd



**Sussex (Konecta)
Transportable Mobile Home**

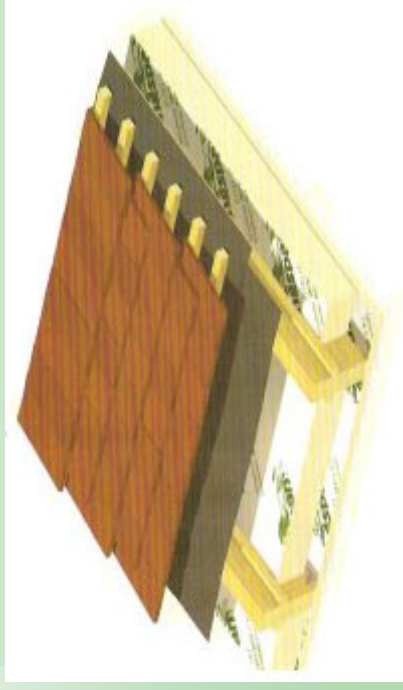




Sussex (Konecta) Transportable Mobile Home

Insulation

All floor, wall and roof panels are insulated with 100mm Rockwool insulation as standard. Kingspan or other insulation materials are available on request.



Metal Profiled Roof tiles

Heavy duty industry standard profiled steel sheet roof tiles are also available to withstand harsh



Complete Wall Sections

A typical cavity wall construction, built to European Standards for winter temperatures -20°C :

It comprises of :

- T&G cladding 20x180 mm
- 14x50 mm ventilation battens
- OSB 12 mm, timber frame 45x95 mm
- Insulation 100 mm
- Option of internal plasterboard 13mm
- Option of internal cladding 20mm
- Outer cladding is stained with ultra





Sussex (Konecta) Transportable Mobile Home



The Konecta House is half completed at the factory phase, the external timber colour which you choose, is ready painted for you using quality Remmers protector. We offer a choice of exterior timber profiles in round or square log finish and for interior finishes, you may go for the traditional all wood look, or perhaps you prefer plasterboard which you can paint in your choice of colour, alternatively you may choose a half wood, half plasterboard finish which is very eye catching.

All glass window units used in windows and doors are double-glazed, argon gas filled for complete warmth and quality. The Konecta House delivered to you flat packed, its construction is done in simple stages I



We offer a range of options for fitting the Konecta House:

1. Fully fitted out and delivered to site.
2. Full Turn Key Offering (Only available on sales of multiple units)
3. Full Erection Service.
4. Option of Mobile or Static Build.
5. Erected to weather-proofed stage, leaving the customer to finish internal stage.
6. Supply Only for Self Build.