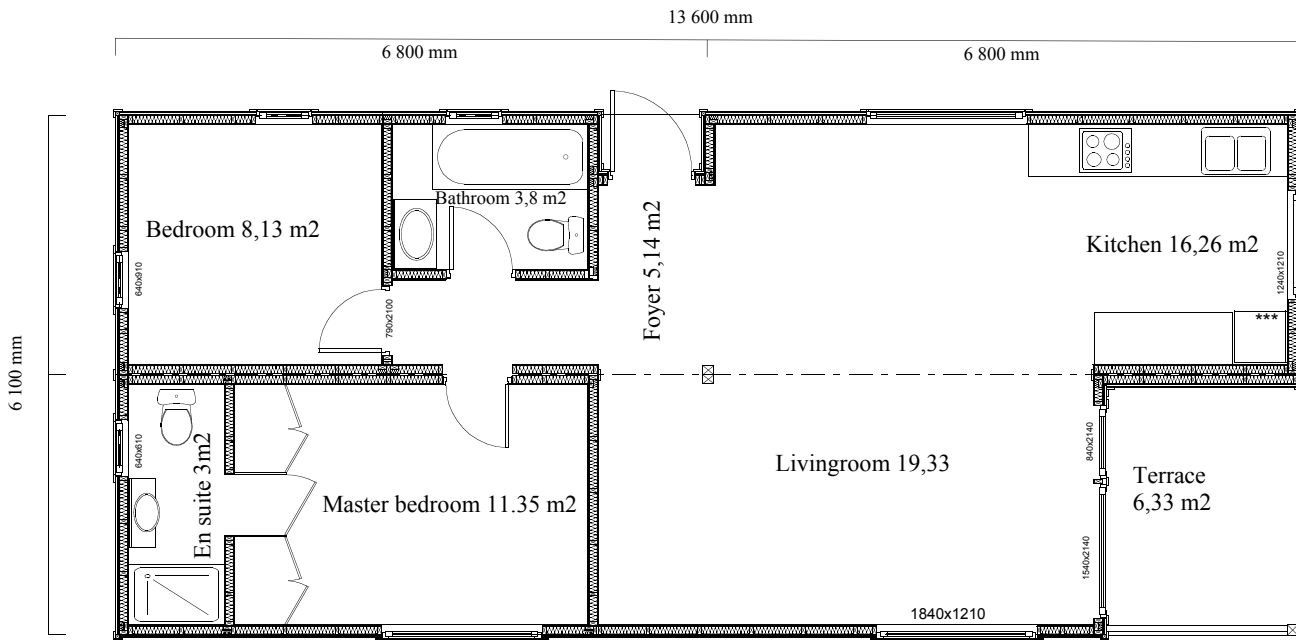


# KONEČTĀ HOME



[www.newforestlogcabins.co.uk](http://www.newforestlogcabins.co.uk)



**Total area** - 82,96 m<sup>2</sup>  
**Floor area** - 67,07 m<sup>2</sup>  
**Terraces** - 7,10 m<sup>2</sup>

13,95,46  
+1,54

Built to European standards for winter temperatures to -- 20° C  
 Outer cladding is stained with extra durable REM-MERS stains.

- T&G cladding 20x180 mm
- 14x50 ventilation battens
- OSB 12 mm
- Timber frame 45x95 mm, insulation 100 mm
- plasterboard 13 mm



# konecta home



[www.newforestlogcabins.co.uk](http://www.newforestlogcabins.co.uk)

**Cost for that unit is**



**30 599.- £**

Price is given for set of materials described below EXW Wimborne, Dorset and excluding VAT



## Delivery set includes :

- ☺ **External walls**, stained wood cladding outside, windproof fabric, insulation 100 mm, plasterboard 13 mm
- ☺ **Internal partition walls**, covered with plasterboard from both sides, 100 mm insulation between 45x95 mm frame
- ☺ **Roof**, 18 mm OSB on top, 45x145 mm rafters, windproof fabric, insulation 150 mm, plasterboard 13 mm or pine profiles 11 mm
- ☺ **Floor**, 22 mm OSB, 45x145 mm floor rafters, 150 mm insulation
- ☺ **Doors and windows**, full wood, double ECO glazing, stained
- ☺ **Fixings**, screws, nails, bolts, montage foam
- ☺ **Drawings**, elevations, plans, sections, foundation plan

## Additional extras :

- ✓ Transport to buildingsite
- ✓ Pinewood cladding for interior
- ✓ Roof coverings
- ✓ Pine floors
- ✓ Kitchen and wardrobes



## Important facts:

- ✓ Quick assembly - just 3...5 days to close the building
- ✓ Delivery time 5...8 weeks after taking the order
- ✓ Affordable pricing - does not cost more than same size apartment
- ✓ Complies to Mobile Home specifications