



# KONECTA CAVITY WALL LOG SYSTEM

Presented by New Forest Log Cabins Ltd

*Mobile Home Version*



From Delivery to completion in less than 3 weeks"



“Making Wood a way of Living”

# WELCOME TO THE KONECTA HOME!

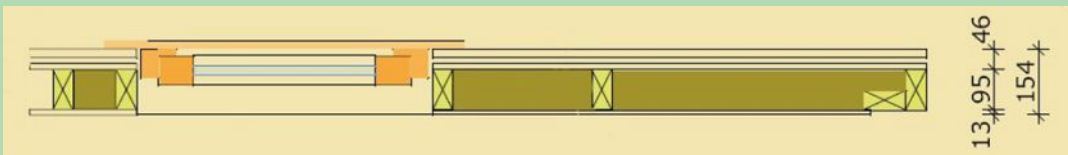
New Forest Log Cabins presents the Konecta Home, a fully insulated log cabin that can conform to mobile specifications or park home with full building regulations making it a very flexible, versatile product for any building i.e. Living accommodation, café's, toilet blocks, reception area's etc. New Forest Log Cabins have designed a new building that comes flat packed, delivered to your door and consists of a base, floor, roof and insulated wall panels that Konect and make installation simple, cutting fitting time by up to 50%.



Do you want a quality log building that takes days rather than weeks to build? Do you want a log building you could fit yourself to conserve costs? Then look no further...

We use quality trees from managed Forests in Estonia that is grown slowly and is the reason why the wood is distinctive with its closely bonded rings. This wood is especially firm and resistant to weather conditions, it is less likely to deform than the wood which grows in the Southern territories. For the manufacturing we use only this consistently matured softwood that has been grown in these well-groomed woods for many years from sustainable resources...

## Typical Wall Section Diagram



The above diagram shows the typical cavity wall construction, built to European Standards for winter temperatures  $-20^{\circ}\text{C}$ . It comprises of T&G cladding 20x180 mm, 14x50 mm ventilation battens, OSB 12 mm, timber frame 45x95 mm, insulation 100 mm, Option of internal cladding 20mm or option of plasterboard 13 mm. Outer cladding is stained with Remmers preservative in a choice of colours.

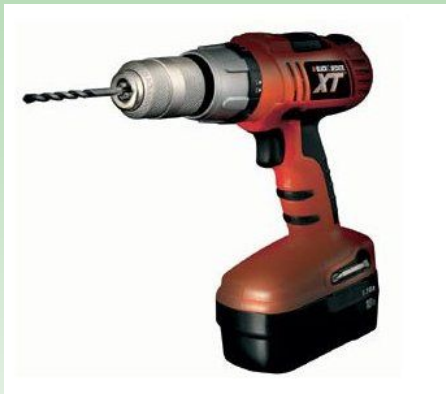


# CONSTRUCTION

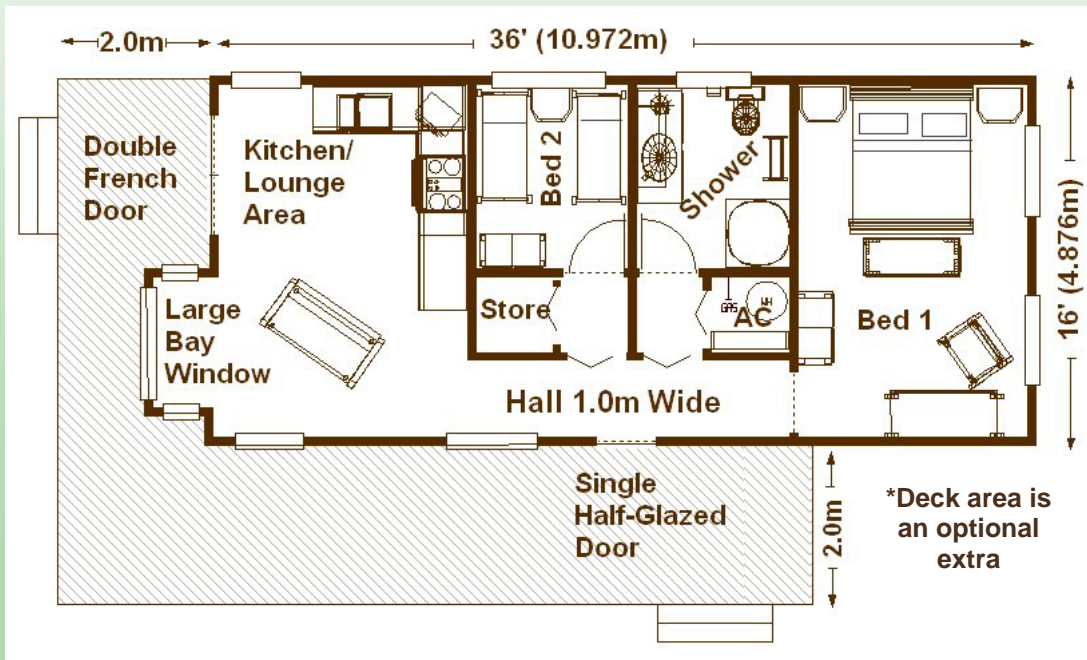


## Construction Phases

Base is constructed first on your prepared foundation which would include your plumbing and electrical connections, wall panels are lowered into place using a standard folk lift, roof panels are then lowered into place as shown. Asphalt Shingles are then applied to the roof which come in a choice of red, green or black square or hexagonal. A plumber and electrician should be on hand to finish off the final connecting of the facilities. The internal finish is then completed within the fully weatherproofed



# THE DEVON KONECTA HOUSE



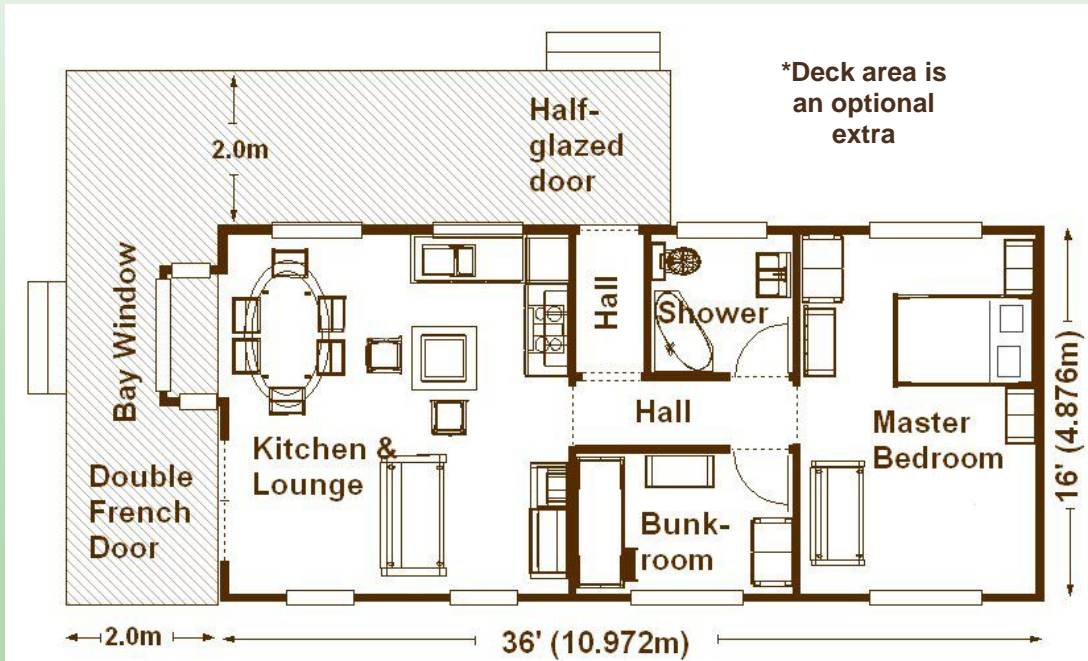
**PRICE: £32,045**

**PLUS DELIVERY AND ERECTION CHARGE**

Page 4

Mobile Home versions now available..!

# THE GOWER KONECTA HOUSE



Price: £33,274

PLUS DELIVERY AND ERECTION CHARGE

Mobile Home versions now available..!

Page 5

# THE SUSSEX KONECTA HOME



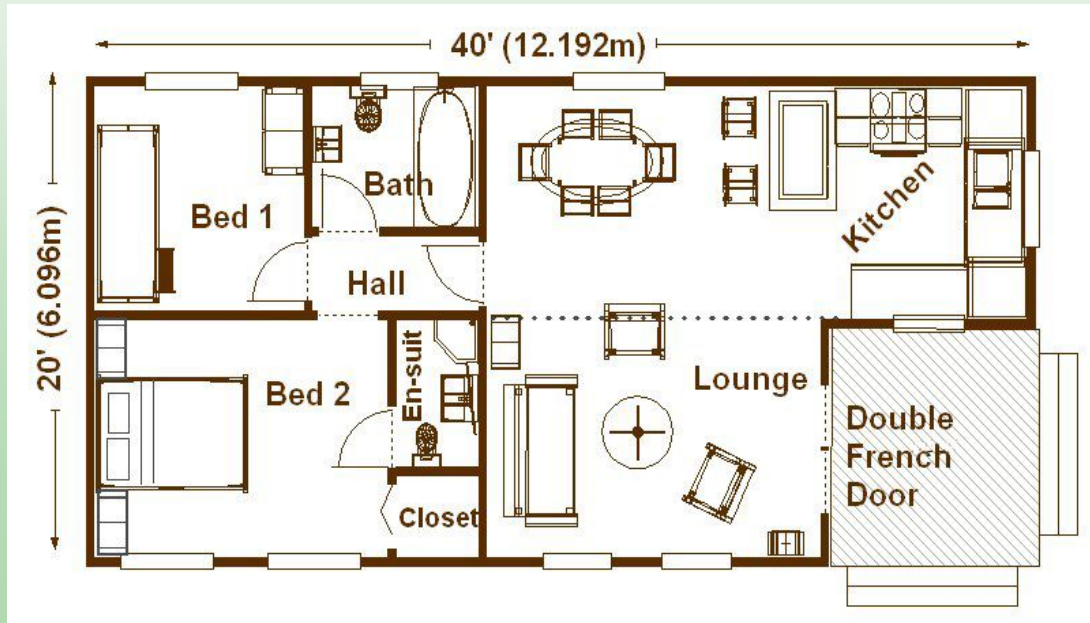
Price: £39,499

PLUS DELIVERY AND ERECTION CHARGE

Page 6

Mobile Home versions now available..!

## THE SURREY KONECTA HOUSE



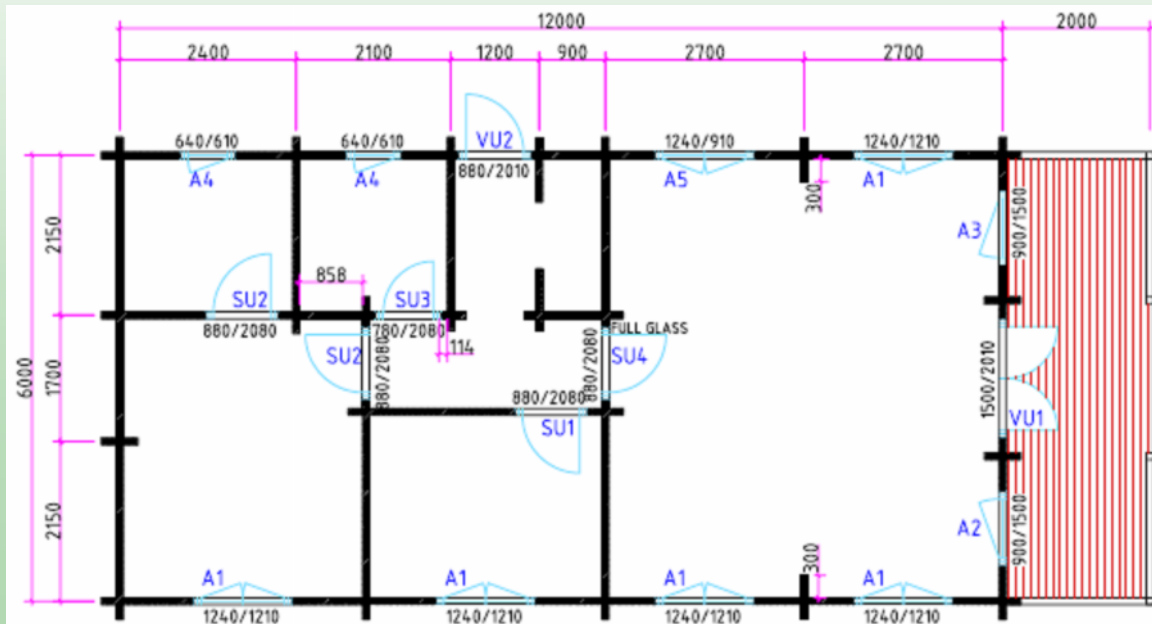
Price: £39,218

PLUS DELIVERY AND ERECTION CHARGE

Mobile Home versions now available..!

Page 7

# THE MULLACOT KONECTA HOUSE



Price: £39,978

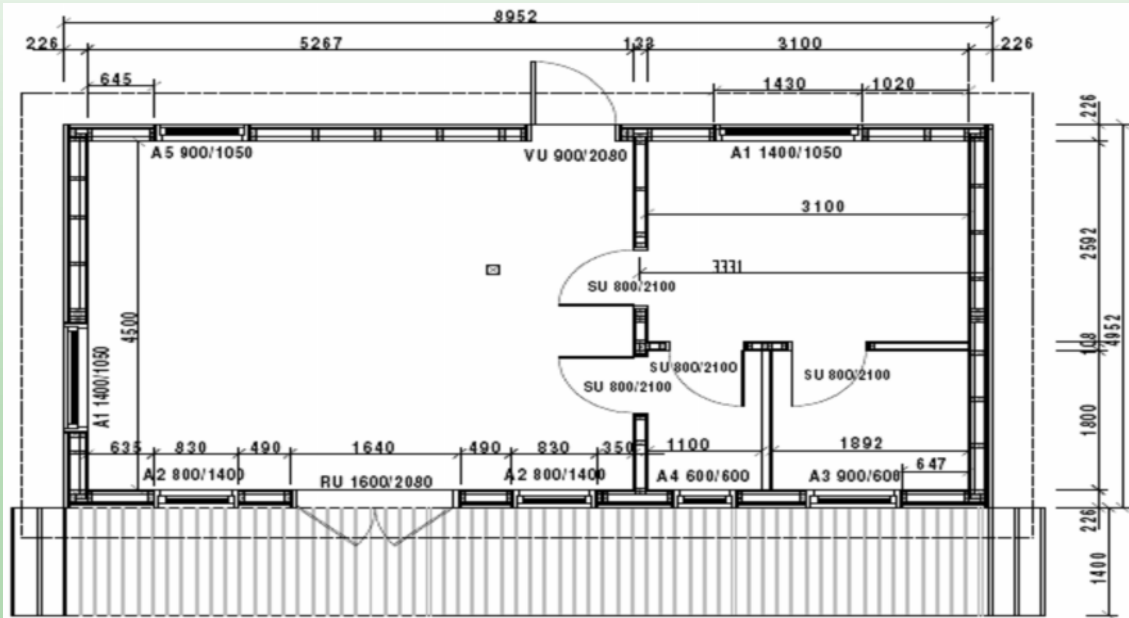
PLUS DELIVERY AND ERECTION CHARGE

Mobile Home versions now available..!

Page 7



# THE PEMBROKE KONECTA HOUSE



*Pembroke Lodge*

Price: £34,510 PLUS DELIVERY AND ERECTION CHARGE

Mobile Home versions now available..!

Page 7

## DETAILS

### Metal Profiled Roof tiles

Heavy duty industry standard profiled steel sheet roof tiles are also available to withstand harsh weather conditions. Rannila Monterrey is the best known and the most favoured of Rannila's Tile sheets.



### Insulation

All floor, wall and roof panels are insulated with 100mm Rockwool insulation as standard. Kingspan or other insulation materials are available on request.



### Complete Wall Sections

A typical cavity wall construction, built to European Standards for winter temperatures  $-20^{\circ}\text{C}$ :

It comprises of :

- T&G cladding 20x180 mm
- 14x50 mm ventilation battens
- OSB 12 mm, timber frame 45x95 mm
- Insulation 100 mm
- Option of internal plasterboard 13mm
- Option of internal cladding 20mm
- Outer cladding is stained with ultra durable Remmers stains in a choice of colours

## 'A NEW WAY TO BUILD'



The Konecta House is half completed at the factory phase, the external timber colour which you choose, is ready painted for you using quality Remmers protector. We offer a choice of exterior timber profiles in round or square log finish and for interior finishes, you may go for the traditional all wood look, or perhaps you prefer plasterboard which you can paint in your choice of colour, alternatively you may choose a half wood, half plasterboard finish which is very eye catching.

All glass window units used in windows and doors are double-glazed, argon gas filled for complete warmth and quality. The Konecta House delivered to you flat packed, its construction is done in simple stages involving bolting the external floor, wall and roof panels together allowing the building to be completely weather proofed within days.



### We offer a range of options for fitting the Konecta House:

1. Fully fitted out and delivered to site.
2. Full Turn Key Offering (Only available on sales of multiple units)
3. Full Erection Service.
4. Option of Mobile or Static Build.
5. Erected to weather-proofed stage, leaving the customer to finish internal stage.
6. Supply Only for Self Build.

## RECOMMENDED HEATING OPTIONS

### Wood Burning Stoves

There is nothing quite like a real fire to give that enduring warmth to your home and our wood burning and multi fuel stoves do just that.

Ultra efficient and incorporating the latest and best clean-burn technologies these stoves not only look great but will heat your home in a very efficient manner.

Wood is a renewable fuel, and therefore the environmental benefits of using a wood burner to heat your house are considerable. With high prices of oil and gas, burning wood and solid fuel to heat your home also makes great economic sense.



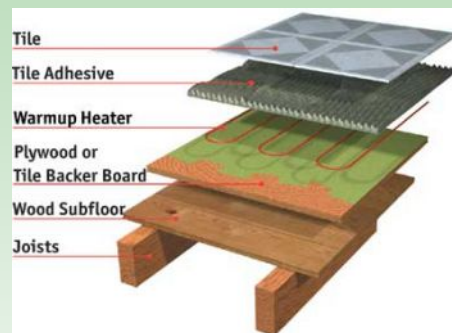
### Under floor Heating

Underfloor heating uses a radiant heat design to gently heat the room from the bottom up. Using underfloor heating has advantages, for example vertical heat. The air rises up the wall, along the ceiling into the centre of the room. When it reaches the centre of the room, it cools slightly, and then descends towards the floor.

Underfloor heating heats the whole floor area resulting in the opposite vertical heat stratification warm feet and a cool head. The vertical heat stratification generated by underfloor heating suits our body's natural requirements.

Underfloor heating spreads the heat over the entire floor area resulting in about half the heat being emitted as low temperature radiant heat. This gentle source of warmth reduces the heat loss from our bodies without overheating the surrounding air.

Radiant heat is considered the most comfortable form of heat. It gently and evenly warms us in the same way as the sun; it mimics that the type of warmth we associate with a perfect summer's day. Warm, but not stuffy.



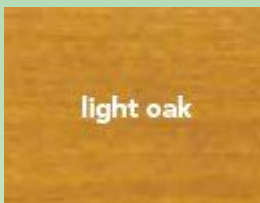
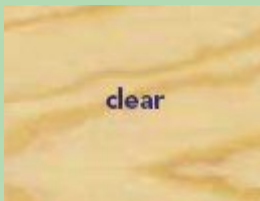
# REMMERS PROTECTOR STAIN



## Caring for you Konnecta Home

Wood is one of the oldest materials used by man. Remmers has made it their duty to protect this natural material as naturally as possible. Remmers Torbil wood preservatives protect freshly felled wood, provide high quality decorative finishes in interior areas just as reliable protection for wood in outdoor areas exposed to environmental influences.

The Konecta home comes ready stained in your choice of colour at the factory.



## CONTACT US FOR MORE INFORMATION!



We utilise modern technologies in the process of building our Konecta Homes, we guarantee that only the goods of perfect quality are brought out of the factory. Quality of a product is inspected in every phase of manufacturing such as:

- attention to detail and planning
- matching of fixings and components
- functioning of the windows doors
- quality of the building elements.

'THE KONECTA SYSTEM PANEL HOUSE' is available in 6 standard model designs, which have all the great features of a log cabin, such as high insulation value, strength, and of course the undeniable aesthetic beauty of natural wood. We have created a new way to build them with an insulated panel system, which cuts construction time by over 50%.

We believe that you should have the freedom to choose that is unique to you and not be forced to accept mass produced standard models. With this in mind, we offer a complete design service and remain flexible enough to co-design with our clients, so if you have a particular layout in mind, we can provide you with a floor plan, 3D visual and a personal quotation free of charge.

If you would like to discuss your requirements in more detail, why not give us a call for more information, after all, it costs nothing to talk..!

**New Forest Log Cabins Ltd**  
**Wyevale Garden Centre,**  
**229 Wimborne Road West**  
**Wimborne, Dorset, BH21 2DN**  
**For further information call**  
**Tel: 01202 868844**  
**Fax: 01202 868870**



**E-mail: [salesoffice@newforestlogcabins.co.uk](mailto:salesoffice@newforestlogcabins.co.uk)**

**Web Site: [www.newforestlogcabins.co.uk](http://www.newforestlogcabins.co.uk)**