



KONECTA CAVITY WALL LOG SYSTEM

Presented by New Forest Log Cabins Ltd

*Square Log painted example



“Making Wood a way of Living”

Welcome to the KONECTA Cavity Wall Log System!

New Forest Log Cabins presents the Konecta Home, a fully insulated log cabin that can conform to mobile specifications or park home with full building regulations making it a very flexible, versatile product for any building i.e. Living accommodation, café's, toilet blocks, reception area's etc. New Forest Log Cabins have designed a new building that comes flat packed, delivered to your door and consists of a base, floor, roof and insulated wall panels that Konect and make installation simple, cutting fitting time by up to 50%.



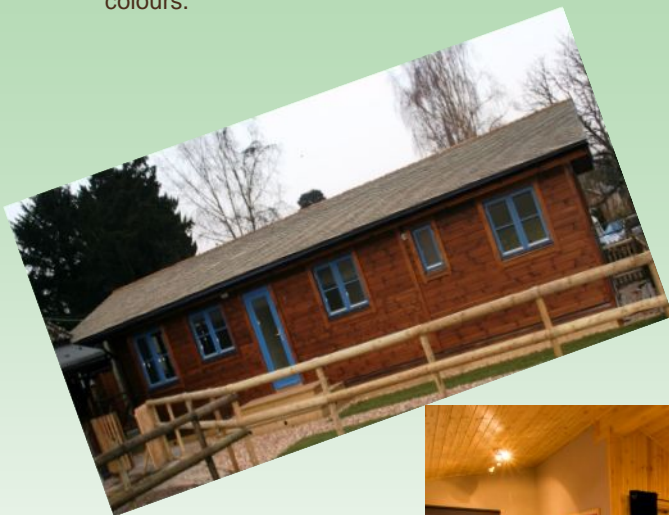
Do you want a quality log building that takes days rather than weeks to build? Do you want a log building you could fit yourself to conserve costs? Then look no further....

We use quality trees from managed Forests in Estonia that is grown slowly and is the reason why the wood is distinctive with it's closely bonded rings. This wood is especially firm and resistant to weather conditions, it is less likely to deform than the wood which grows in the Southern territories. For the manufacturing we use only this consistently matured softwood that has been grown in these well-groomed woods for many years from sustainable resources...

Typical Wall Section Diagram;



The above diagram shows the typical cavity wall construction, built to European Standards for winter temperatures -20°C . It comprises of T&G cladding 20x180 mm, 14x50 mm ventilation battens, OSB 12 mm, timber frame 45x95 mm, insulation 100 mm, Option of internal cladding 20mm or option of plasterboard 13 mm. Outer cladding is stained with Remmers preservative in a choice of colours.

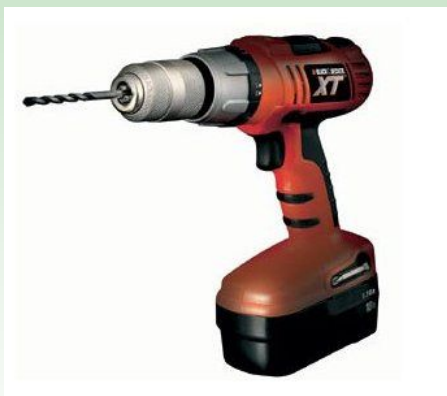


CONSTRUCTION

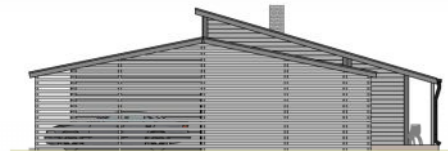


Construction Phases

Base is constructed first on your prepared foundation which would include your plumbing and electrical connections, wall panels are lowered into place using a standard folk lift, roof panels are then lowered into place as shown. Asphalt Shingles are then applied to the roof which come in a choice of red, green or black square or hexagonal. A plumber and electrician should be on hand to finish off the final connecting of the facilities. The internal finish is then completed within the fully weatherproofed shell.



KONECTA HOUSE DESIGN



Made to Measure Homes..!

KONECTA LOG HOUSE SYSTEM



The Konecta House is half completed at the factory phase, the external timber colour which you choose, is ready painted for you using quality Remmers protector. We offer a choice of exterior timber profiles in round or square log finish and for interior finishes, you may go for the traditional all wood look, or perhaps you prefer plasterboard which you can paint in your choice of colour, alternatively you may choose a half wood, half plasterboard finish which is very eye catching.

All glass window units used in windows and doors are double-glazed, argon gas filled for complete warmth and quality. The Konecta House delivered to you flat packed, its construction is done in simple stages involving bolting the external floor, wall and roof panels together allowing the building to be completely weather proofed within days.



We offer a range of options for fitting the Konecta Cavity Wall Log House:

1. Fully fitted out and delivered to site.
2. Full Turn Key Offering (Only available on sales of multiple units)
3. Full Erection Service.
4. Option of Mobile or Static Build.
5. Erected to weather-proofed stage, leaving the customer to finish internal stage.
6. Supply Only for Self Build.

A New Way to Build

KONECTA HOUSE



Metal Profiled Roof tiles

Heavy duty industry standard profiled steel sheet roof tiles are also available to withstand harsh weather conditions. Rannila Monterrey is the best known and the most favoured of Rannila's Tile sheets.

Insulation

All floor, wall and roof panels are insulated with 100mm Rockwool insulation as standard. Kingspan or other insulation materials are available on request.



Caring for you Konecta Home

Wood is one of the oldest materials used by man. Remmers has made it their duty to protect this natural material as naturally as possible. Remmers Torbil wood preservatives protect freshly felled wood, provide high quality decorative finishes in interior areas just as reliable protection for wood in outdoor areas exposed to environmental influences.

The Konecta home comes ready stained in your choice of colour at the factory.



Complete Wall Sections

A typical cavity wall construction, built to European Standards for winter temperatures -20°C . It comprises of :

- T&G Oval cladding 20x180 mm
- 14x50 mm ventilation battens
- OSB 12 mm, timber frame 45x95 mm
- Insulation 100 mm
- Option of internal plasterboard 13mm
- Option of internal cladding 20mm
- Outer cladding is stained with ultra durable Remmers stains in a choice of colours



Made to Measure Cavity Log Homes..!

CONTACT US FOR MORE INFORMATION!



We utilise modern technologies in the process of building our Konecta Homes, we guarantee that only the goods of perfect quality are brought out of the factory. Quality of a product is inspected in every phase of manufacturing such as:

- attention to detail and planning
- matching of fixings and components
- functioning of the windows doors
- quality of the building elements.

Konecta Cavity Wall Log System

New Forest Log Cabins presents the Cavity Wall Log Home, a fully insulated log cabin that can conform to mobile specifications or park home with full building regulations making it a very flexible, versatile product for any building i.e. Living accommodation, café's, toilet blocks, reception area's etc.

The Konecta Log Home is available in many standard model designs, which have all the great features of a log cabin, such as high insulation value, strength, and of course the undeniable aesthetic beauty of natural wood. We have created a new way to build them with an insulated panel system. Your custom designed building comes flat packed, delivered to your door and consists of a base, floor, roof and insulated wall panels that easily fit together and make installation simple, cutting fitting time by up to 50%.

The outer walls are constructed from prefabricated timber panels with a choice of external claddings - half round or rectangular tongue and groove. The timber frame is constructed using various thicknesses from 120mm to 180mm timber studs set at 400mm centres and then clad from the above choice. There is a choice of interior cladding such as round log, tongue and groove or plasterboard - or a mixture of all three! The panels are insulated with mineral wool, Rockwool or Kingspan insulation panels and all incorporate a vapour barrier.

We believe that you should have the freedom to choose that is unique to you and not be forced to accept mass produced standard models. With this in mind, we offer a complete design service and remain flexible enough to co-design with our clients, so if you have a particular layout in mind, we can provide you with a floor plan, 3D visual and a personal quotation free of charge.

**New Forest Log Cabins Ltd
Wyevale Garden Centre,
229 Wimborne Road West
Wimborne, Dorset, BH21 2DN**

Tel: 01202 868844 Fax: 01202 868870

E-mail: salesoffice@newforestlogcabins.co.uk

Web Site: www.newforestlogcabins.co.uk